



Brass Fitting

Semi Push-Fit design fittings eliminate all the hassles of threading, welding or glue connections. Simply push in and tighten to connect. It is that easy.

Certifications & Approvals

- IAPMO/ UPC Certified
- NSF 61 Compliant
- NSF 372 Compliant : Lead-Free



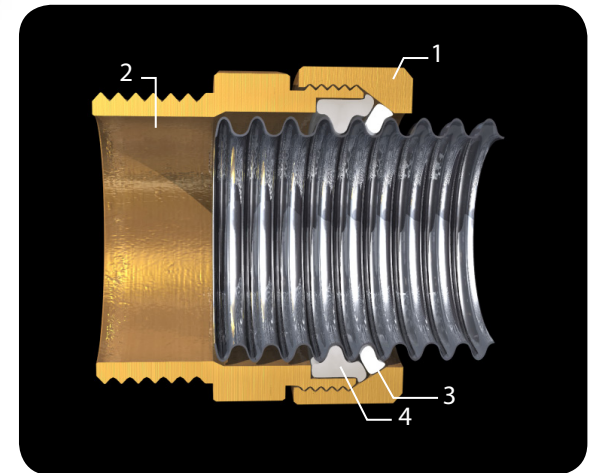
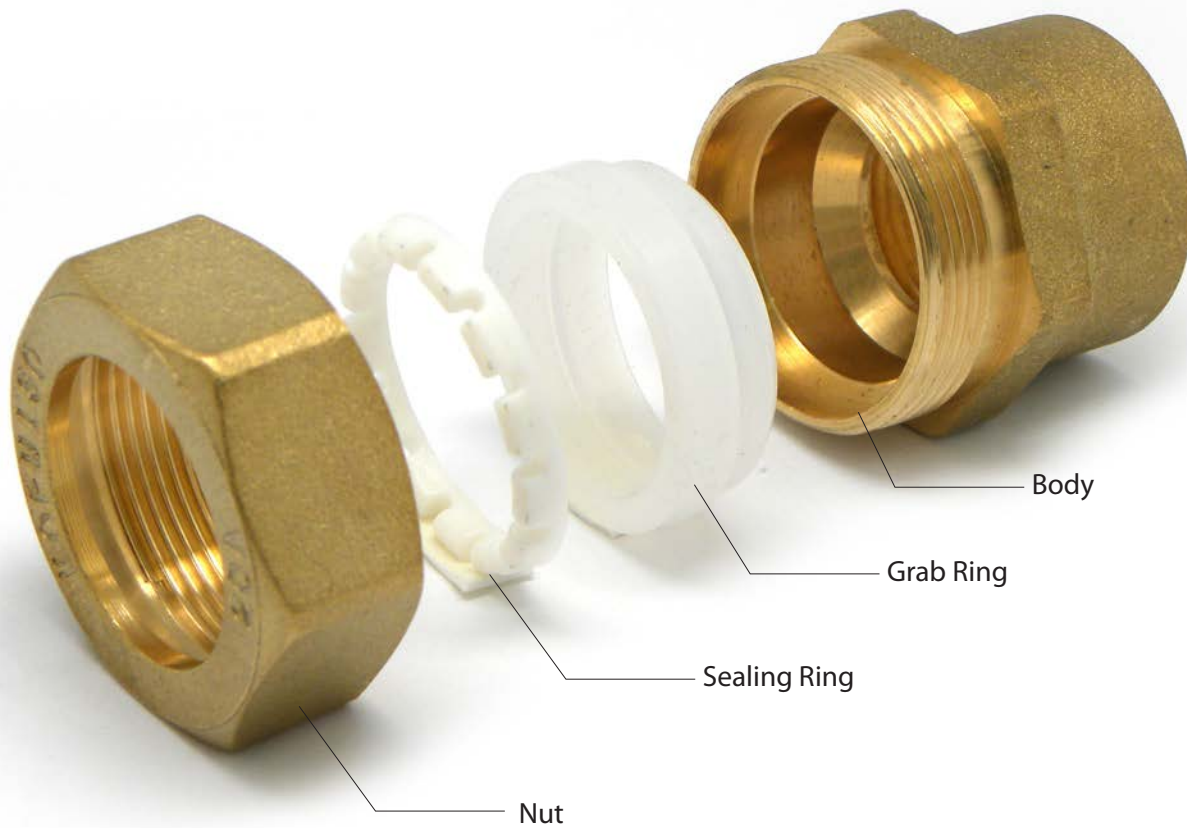


Applications

- Water Distribution System
- Boilers
- Water Heaters
- Thermal Solar Systems
- Tankless Water Heaters

Benefits

- Semi Push-Fit Design
- Reduced Labor Costs
- Resistant to Scaling & Corrosion
- No Special Tools Required
- Versatility of Application



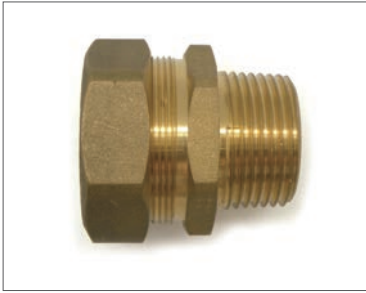
1. Nut : Brass UNS C37700 (ASTM DS-561)
2. Sealing Ring : Silicon
3. Grab Ring : Nylon 66 or STS 304
4. Body : Brass UNS C37700 (ASTM DS-561)

Materials

Body/ Nut	Brass UNS C 37700 (ASTM DS-561)
Lead-Free Body/ Nut	Brass UNS C 46500 (ASTM B171)
Sealing Ring	Silicone
Isolation Ring	Nylon 66

Technical Specification

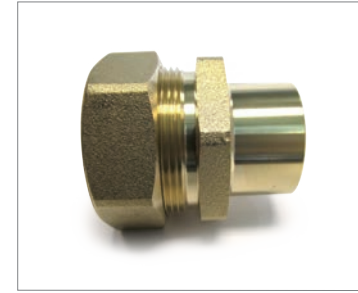
Sizes	1/2", 3/4", 1", 1-1/4", 1-1/2", 2"
Rated Working Pressure	147 psi



• Leed Free Straight Male / Straight Male



• Leed Free Straight Female / Straight Female



• Leed Free Copper Sweat Apater / Copper Sweat Apater



• Coupling / Union



• Push-Fit Coupling



• Reducing Coupling



• Female Elbow



• Tee



• Reducing Tee



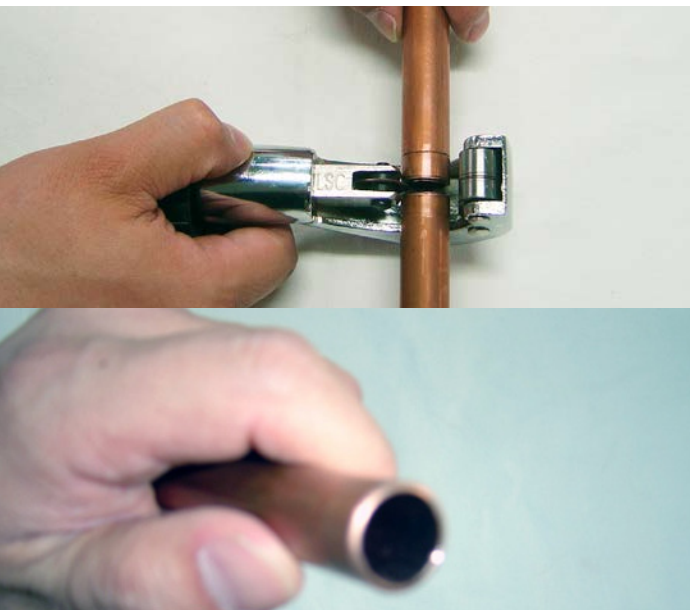
• Female Tee



• Reducing Female Tee

1.

Cut the tube straight and flatly with pipe cutter, remove the burrs and chamfer the tube so as not to damage the O-rings on application.



2.

Check the cap is firmly secured. If the cap is not firmly secured, join the cap to insure all the inner parts are in place. The cap should be joined by hand, in case of joining the cap with tools, the cap would be broken or the dimension of the cap could be changed.



3.

Push the tube through the end stop to ensure O-ring seal. In assembling the tube with the Push In Fitting, no lubricating oil is needed, and the assembling is smoothly inserted.



▲ After inserting the tube into the Push In Fitting, don't bend the tube too much, the forced bending of the tube near the Push In Fitting could make cracks or harms to the inner parts (O-ring, washer, grab ring).

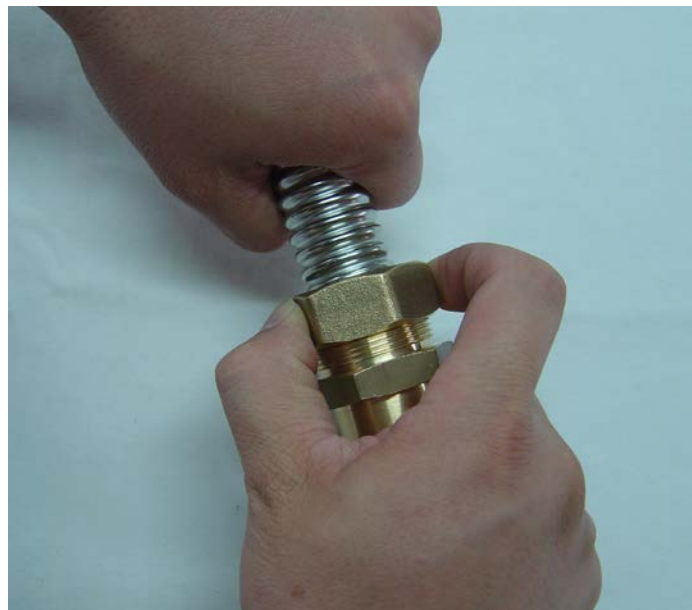
4.

Cut the Corrugated Stainless Steel Tube straight with cutter.



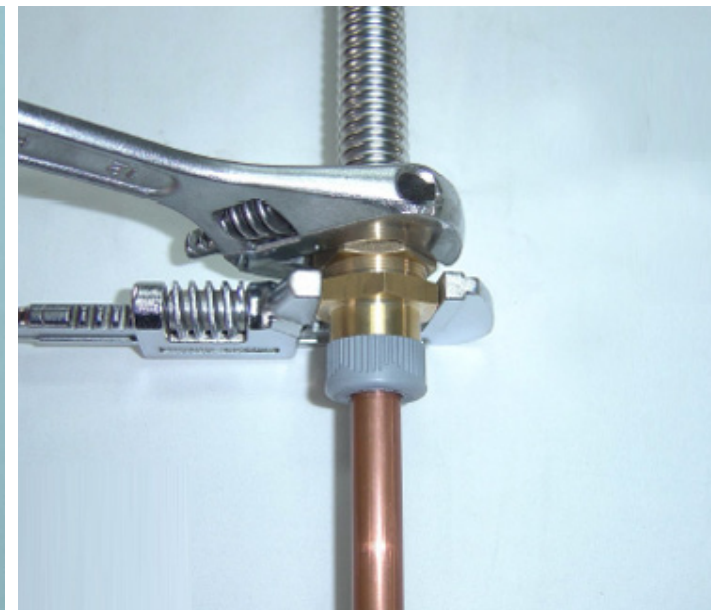
5.

Insert the Corrugated Stainless Steel Tube into the Brass Fitting.



6.

Join the nut firmly with wrench.



Required System Parts

- Qty. 1 : Water Heater connector
- Qty. 1 : Push-Fit fitting

Required tool

- Wrenches

Push-Fit Fitting
INSTALLATION INSTRUCTION